

The background of the cover is an abstract black and white photograph. It features deep, undulating, and layered textures that resemble a cross-section of a canyon, a geological formation, or perhaps a close-up of a piece of wood or stone with distinct grain patterns. The lighting creates strong highlights and deep shadows, emphasizing the three-dimensional quality of the surface.

Hotel Art Guide

MONDRIAN SINGAPORE DUXTON

ART COLLECTION

MONDRIAN
SINGAPORE DUXTON



Mondrian Singapore Duxton

Mondrian Singapore Duxton presents the hotel as a canvas. Introducing a permanent multi-disciplinary collection featuring local and international talent across the spectrum of media, from painting and photography to digital art and breathtaking sculptures in the heart of Duxton Hill.

The Mondrian Singapore Duxton Art Collection integrates art and design with the philosophies of architecture, each piece featured in the collection has a specific placement in the hotel designed to add a sense of discovery as guests journey through

The Artling

The Mondrian Singapore Duxton Art Collection was curated in collaboration with The Artling, Asia's premier Art and Design consultancy. Their online platform, theArtling.com, lists thousands of artists from around the world, with new artworks and design items added to the site daily. The Artling offers consultancy services to both private and corporate clients, working with private collectors and with interior designers, architects and property developers.

GF

WHAT PARTY (2020) by KAWS

6-meter bronze sculpture

Standing tall on the corner of Neil and Craig Roads, WHAT PARTY represents the eclecticism of the Duxton street culture and nudges at the viewers' collective subconscious. KAWS' iconic character CHUM acts as the perfect monument to Mondrian Duxton Singapore's community of creatives and the wild at heart.

Location: Entrance to Mondrian Singapore
Duxton, Craig Road



Crystallized (2022) by SOFTlab

Aluminium structure clad in
iridescent acrylics
100 (H) x 320 (W) x 305 (D) cm

Nature's growth patterns are merged with optical materials to create a prism-like structure inspired by crystal growth. Crystallized's iridescent surface refracts light as viewers move beneath it, creating a kaleidoscopic effect in the space.

Location: Level 1, Christina's Duxton Hill



3

I Longed For You (2019) by Tracey Emin

Neon
308.6 (H) x 470 (D) cm

Tracey Emin's multi-disciplinary art is primarily expressionistic, a cypher for memories and emotions that can be frank and poetic, intimate and universal. Emin's neon works have represented a critical part of her practise since the 1990s, combining her handwritten messages with luminous colour, they serve as messages from the past and can also be viewed as projections for a hopeful future.

Location: Level 3, Bottega di Carna



Mandala Series (2020) by Emma Anna

Archival pigment print
129.5 (H) x 129.5 (W) cm, framed

Waterfall IV (2020) by Dawn Ng

Video (mp4), 4K
21 mins 36 secs, displayed on 85" screen

Waterfall IV is a time-lapse film from Dawn Ng's Into Air series. The film suspends time between one's self and a moving image through this meditative erosion of colour, echoing the destruction of avalanches and waterfalls in slow motion.

Location: Level 3, Lift Lobby
Image courtesy of Dawn Ng and
Sullivan+Strumpf



Deep Magenta, Mirrored (2022) by Ian Davenport

Acrylic on aluminium mounted
onto aluminium panel
(2 panels with additional floor section)
290 (H) x 200 (W) cm

Ian Davenport is an abstract painter recognised for his complex colour compositions and whose work is informed by a deep understanding of paint. His "Puddle Paintings" demonstrate Davenport's process-led approach, lines of acrylic paint are poured down from the top of the painting to the floor, pooling and spreading out. This "puddle" alludes to a recurring tension in his work: the presence of both control and chance.

Location: Level 3, Near Front Desk
Image Courtesy of the artist and Waddington
Custot



RF

Ferrari Legs (2022) by Tyler Shields

Chromogenic Print on
Kodak Endura Luster Paper
123 (H) x 159 (W) cm (framed)

Harkening back to Mondrian's original roots and bringing some L.A. flair to Duxton Hill, we present Hollywood photographer Tyler Shields' work. Shields boasts a diverse and edgy series of works; he once infamously set a \$100,00 Birkin Bag on fire in the name of art.

Location: Rooftop, Canyon Club



Water Mouths Monochrome (2012) by Tyler Shields

Chromogenic Print on
Kodak Endura Luster Paper
128 (H) x 189 (W) cm (framed)

Location: Rooftop, Canyon Club



Tower Guest Room Artwork



Rojak (2021)
by André Wee

Print on Wood
100 (H) x 100 (W) cm (framed)

Rojak pulls on a mix of architectural and natural elements unique to Singapore's landscape to create this Augmented Reality artwork that peels and reveals layers of different ethnic influences converging.

Activate the artwork's Augmented Reality feature by downloading the Artvive mobile app below:

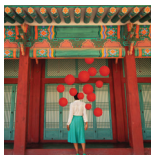
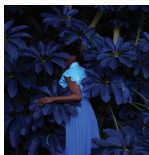


Google Play



App Store

Shophouse Suite




Archival pigment print,
from top left to right, top
to bottom

190 (H) x 190 (W) cm framed
Morning Calm (2022)
118 (H) x 118 (W) cm framed
Passion Open New Doors (2022)
The Right Company (2022)
Searching For Happiness (2022)
Revive Your Curiosity (2021)

Various Prints
by Fares Micue



Each Mondrian Shophouse Suite features a one-of-a-kind edition print by self-portrait photographer Fares Micue. Micue's work draws from the observation of her surroundings, personal experiences, and her own transformation to create beautiful conceptual images, delivering messages of self-love and empowerment.



Mondrian Singapore Duxton
16A DUXTON HILL, SINGAPORE 089970

Follow us on Instagram @mondriansingapore