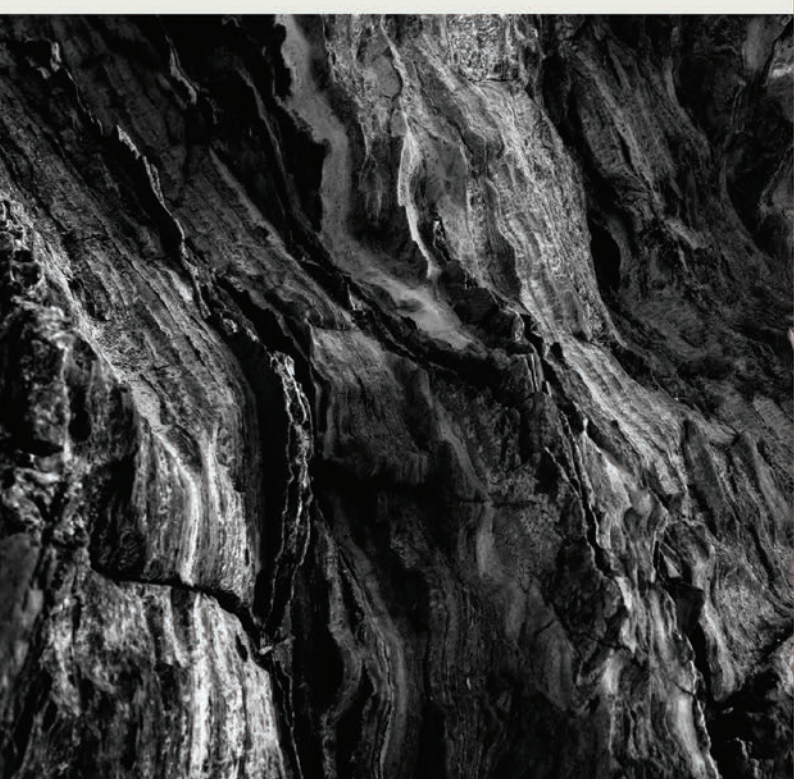


MONDRIAN



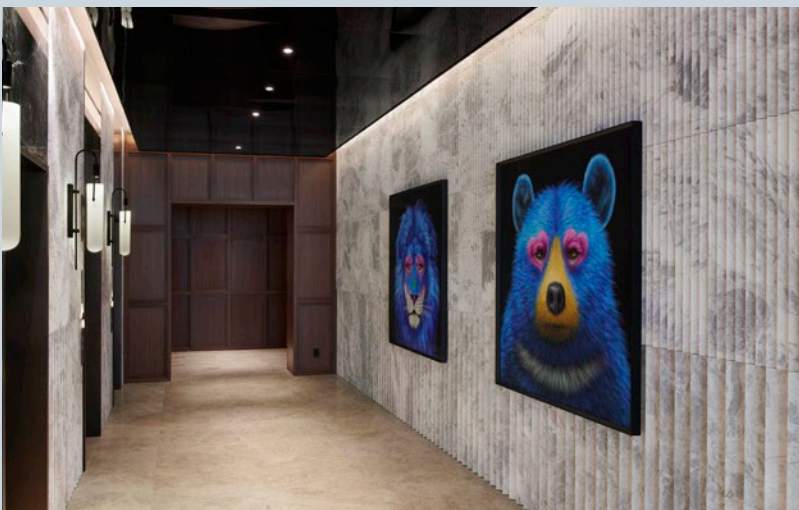
MONDRIAN

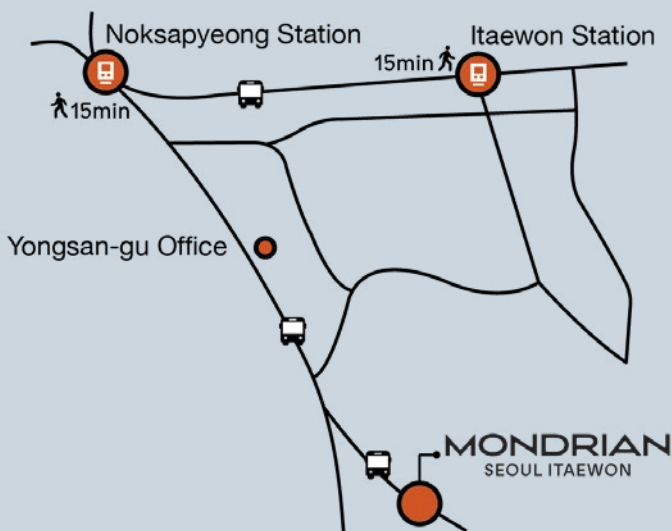
SEOUL ITAEWON

A MUST DESTINATION

Mondrian Seoul Itaewon is an immersive lifestyle destination, fueled by bold, captivating design and an expressive, playful mindset.

Mondrian Seoul Itaewon is an ideal choice both for forward-thinking locals and for international visitors who are looking for fresh and exciting cultural experiences.





ADDRESS

23 Jangmun-ro, Yongsan-gu,
Seoul, 04392, Republic of Korea

TRANSPORTATION

Subway

Line 6 Noksapyeong Station (Exit 3) /
Itaewon Station (Exit 4)

Bus

100, 143, 401, 406, 740,
Yongsan-gu Office

MONDRIAN SEOUL ITAEWON

Rooms & Suites	4p
Dine & Drinks	12p
Event Spaces	18p
Weddings	27p
Fitness	30p



ROOMS & SUITES

Each room at Mondrian Seoul Itaewon features cutting-edge design and functionality. Experience a stylish, modern and comfortable stay.

All 295 rooms have been redesigned by award winning Singapore-based interior design company Asylum.



ROOMS & SUITES

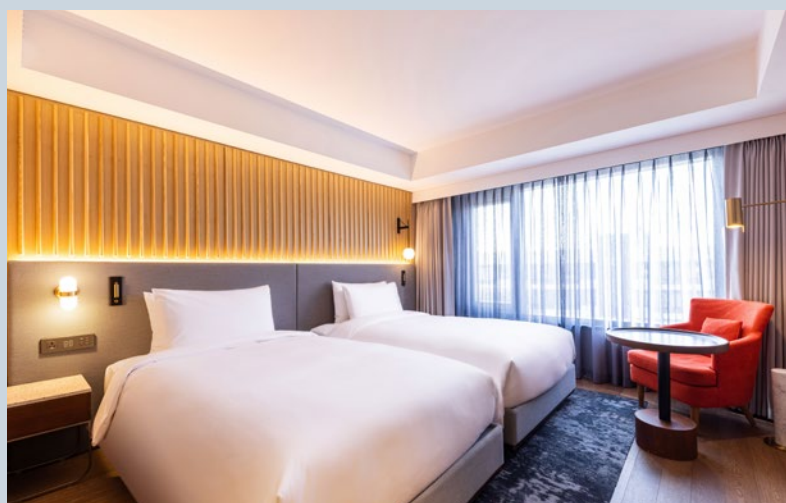
CATEGORY	BED	SIZE SQ.	Q'TY	SHOWER	BENEFITS	FEATURED IN EVERY ROOM
SIGNATURE ROOM	TWIN	23.14	78	RAIN SHOWER	IN-ROOM WATER PURIFIER NESPRESSO MACHINE WITH CAPSULES 55" HD TV BLUETOOTH SPEAKERS COMPLIMENTARY ACCES TO FITNESS CLUB & INDOOR POOL	SIMMONS Beautyrest Mattress Down Comforters and Pillows GROWN ALCHEMIST Bath Amenities and Plush Robes USB Charging Port Pet Friendly (Fee Applies) 100% Non-Smoking Hotel Minibar with in-room Refreshments Wireless High-Speed Internet
	KING	23.14	79			
	KING (Accessible)	23.14	7			
SIGNATURE CITY KING	KING	23.14	116	RAIN SHOWER	IN-ROOM WATER PURIFIER NESPRESSO MACHINE WITH CAPSULES 55" HD TV BLUETOOTH SPEAKERS COMPLIMENTARY ACCES TO FITNESS CLUB & INDOOR POOL COMPLIMENTARY ACCES TO SAUNA (SUMMER SEASON: OUTDOOR POOL)	
SUITE STUDIO KING	KING	36.67	3	BATH TUB/RAIN SHOWER		
SUITE CITY KING	KING	47.93	7	BATH TUB/RAIN SHOWER	2 BOTTLED WATERS NESPRESSO MACHINE WITH CAPSULES 55" HD TV BLUETOOTH SPEAKERS COMPLIMENTARY ACCESS TO FITNESS CLUB & INDOOR POOL & SAUNA (SUMMER SEASON: OUTDOOR POOL)	SIMMONS Beautyrest "Black" Mattress Down Comforters and Pillows GROWN ALCHEMIST Bath Amenities and Plush Robes USB Charging Port Pet Friendly (Fee Applies) 100% Non-Smoking Hotel Minibar with in-room Refreshments Wireless High-Speed Internet
SUITE CABANA KING	KING	59.17	3	RAIN SHOWER		
SUITE MONDRIAN KING	KING	105.45	2	BATH TUB/RAIN SHOWER	2 BOTTLED WATERS NESPRESSO MACHINE WITH CAPSULES 55" HD TV BLUETOOTH SPEAKERS DYSON HAIR DRYER DYSON AIR PURIFIERS COMPLIMENTARY ACCESS TO FITNESS CLUB & INDOOR POOL & SAUNA (SUMMER SEASON: OUTDOOR POOL)	

SIGNATURE ROOM

Mondrian Seoul Itaewon's Signature Room offers modern amenities, contemporary design, and all the practical features you need for a comfortable stay. Wi-Fi, Nespresso coffee machines, and Bluetooth speakers are provided, as well as state-of-the-art fitness facilities and indoor swimming pools. Every detail is designed to bring guests satisfaction.



SIGNATURE KING 23.14m² / 79 ROOMS



SIGNATURE TWIN 23.14m² / 78 ROOMS

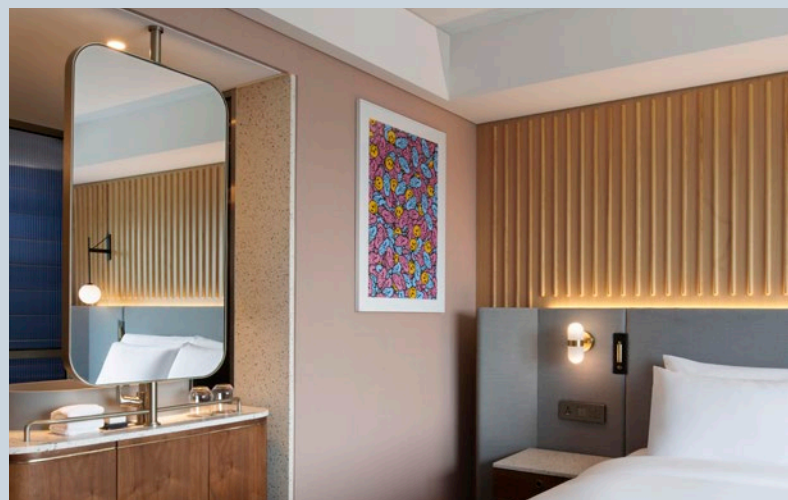
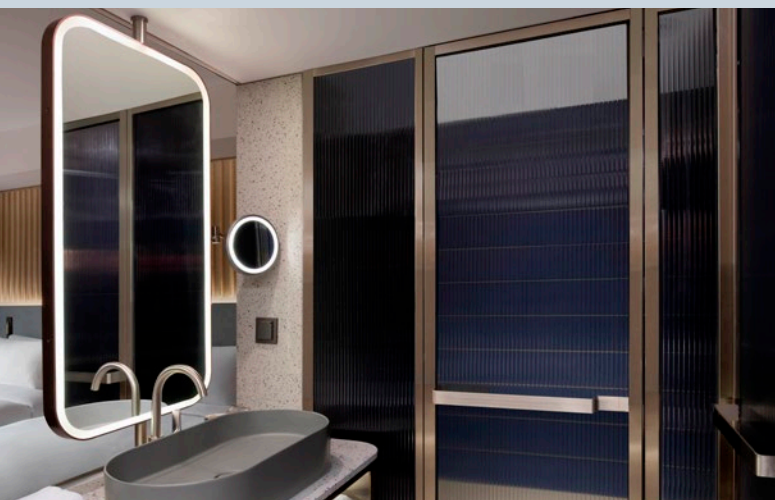
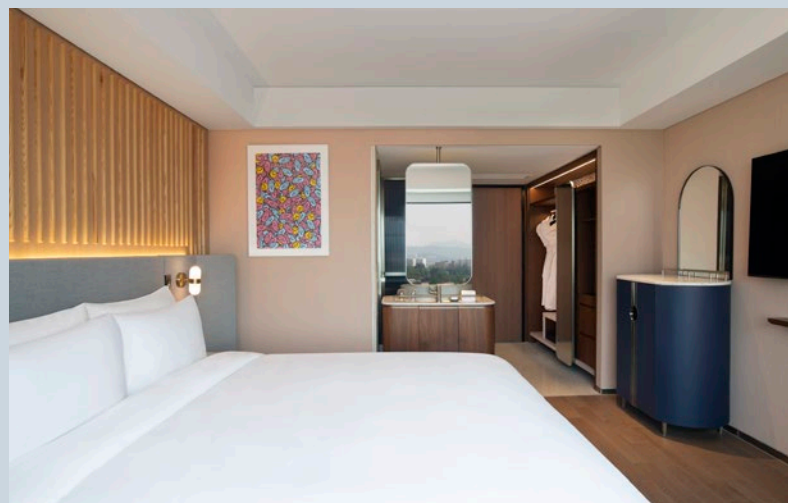


SIGNATURE KING (ACCESSIBLE) 23.14m² / 7 ROOMS

SIGNATURE CITY KING

23.14m² / 116 ROOMS

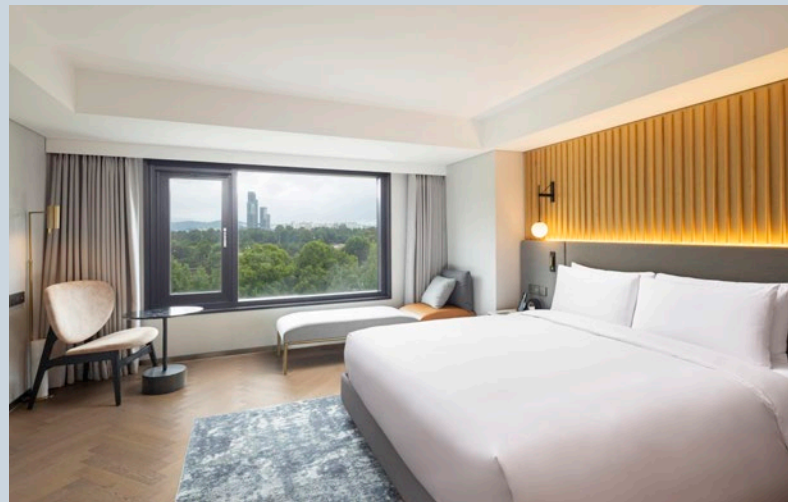
Mondrian Seoul Itaewon's Signature City King rooms are stylish with an artistic design. Located on a higher floor, guests can enjoy the beautiful view of Seoul. Includes sauna session your perfect city escape. *During the summer season, outdoor pool access is offered instead of sauna.



SUITE STUDIO KING

36.67m² / 3 ROOMS

Suite Studio King set the scene for a relaxing break. These spacious suites offer all the amenities and benefits of our standard rooms, along with the added comfort of a Simmons Beautyrest Black mattress and a stylish bathroom with a sleek bathtub for a more indulgent and restful stay.



SUITE CITY KING

47.93m² / 7 ROOMS

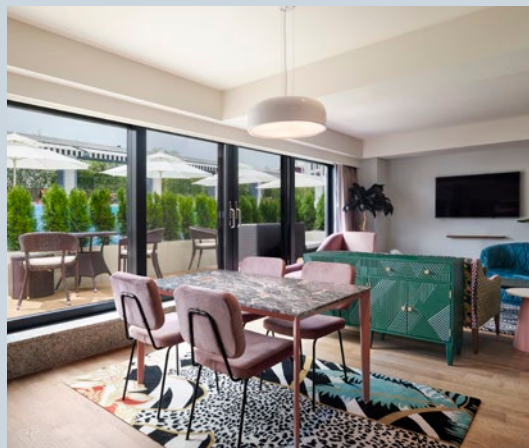
Suite City King rooms are designed to make you feel at home while away. Enjoy stunning Seoul city views through large windows, separate living and bedroom spaces, stylish interiors with curated furniture and bathroom design, and the supreme comfort of a Simmons Beautyrest Black mattress.



SUITE CABANA KING

59.17m² / 3 ROOMS

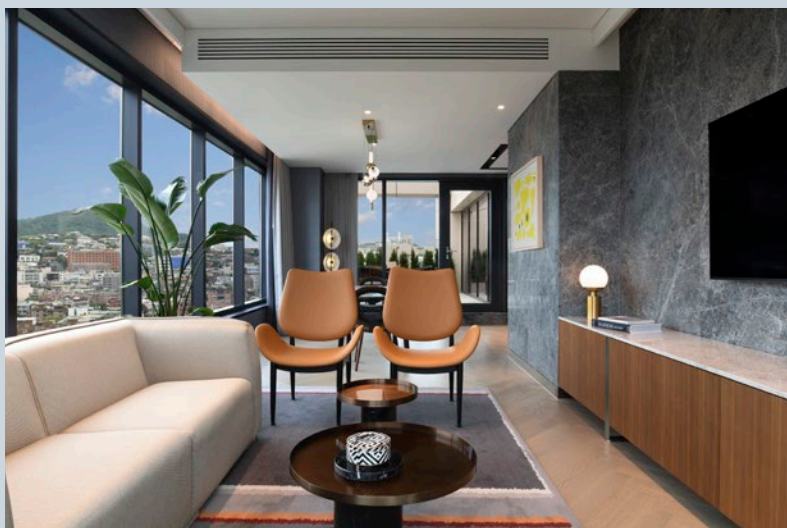
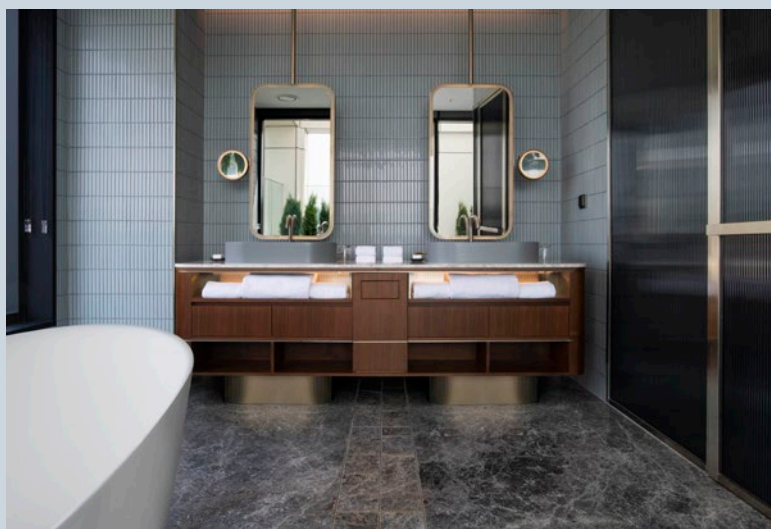
One of only three exclusive Suite Cabana King rooms, each featuring a private terrace with direct access to the Altitude Pool & Lounge. Exotic interiors and designer furniture create a resort-like atmosphere, making it ideal for private gatherings or relaxing stays. During the outdoor pool season, enjoy complimentary pool access and welcome drinks.



SUITE MONDRIAN KING

105.45m² / 2 ROOMS

Suite Mondrian King, located on the top floor, is the hotel's most prestigious room category. It features a spacious bedroom and living area, a bathroom with dual vanity and an elegant bathtub, a Dyson hair dryer, and a private mini terrace. A Simmons top-tier mattress ensures a truly restful stay.



DINE & DRINKS

Mondrian Seoul Itaewon features Ennismore's food and beverage brands including signature Mediterranean restaurant Cleo, Blind Spot, Rumpus Room, Altitude Pool & Lounge and Privilege Rooftop Bar.





Cleo

Seoul Itaewon

CLEO

Cleo provides a warm, social setting to enjoy shareable dishes that feature traditional flavors with a modern twist. The classic and the contemporary come together to create a dining experience like no other. Whether it's a quick bite or an indulgent feast, Cleo's casual-cool ambiance makes it the perfect destination for any occasion.

mondrian-seoul.com | 02.2076.2050

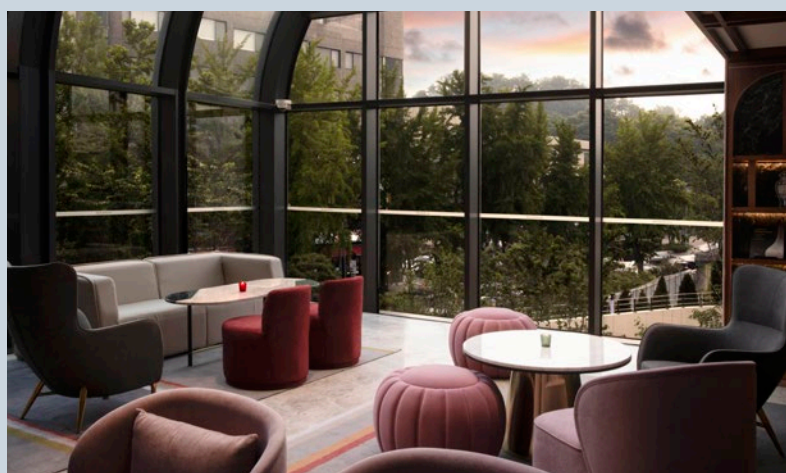


BLIND SPOT

BLIND SPOT

Blind Spot is a venue that's just as good in the morning as it is late at night. While signature tea-infused cocktails are served during the day, it takes on a different character at night. As evening falls, Blind Spot offers a range of bespoke and signature cocktails that are bursting with flavor. No matter what time you visit, it's the perfect place to meet up and enjoy a drink.

mondrian-seoul.com | 02.2076.2051



RUMPUS ROOM

RUMPUS ROOM

Rumpus Room is an elegant bar inspired by a classic library, offering a selection of seasonal cocktails, premium wines, champagne, and light bites.

With stunning decor, the venue combines traditional art decor glamor with a modern, 'dream-like' twist.

On Friday and Saturday evenings, enjoy Rumpus Hour with free-flow champagne, tequila, and curated pairing dishes.

mondrian-seoul.com | 02.2076.2052



ALTITUDE

POOL & LOUNGE

ALTITUDE *SEASONAL SUMMER OPERATION

Altitude Pool & Lounge is the perfect place to unwind and spend the day at ease. Escape the everyday and relax in the comfort of our daybeds and sofas, with dedicated poolside service on the Altitude deck as you sip cocktails to a chill-out soundtrack. The venue is also ideal for special events. Simply share your requirements with our dedicated bar team, and we will take care of the rest.

mondrian-seoul.com | 02.2076.2061



privilege

PRIVILEGE

Privilege combines a terrace with a stylish interior, where carefully curated objects create a refined, classical ambiance. Enjoy a selection of fine whiskeys and bespoke cocktails from around the world, paired with spectacular panoramic city views.

Housed in a uniquely structured space that was originally built as a cooling tower, the bar carries the building's history while offering a distinctive Seoul experience.

mondrian-seoul.com | 02.2076.2071

EVENT SPACES

Mondrian Seoul Itaewon offers event venues to suit every occasion. Our meeting rooms provide over 500 square feet of versatile space, while our ballrooms feature an impressive 8,400 square feet. We offer a full range of meeting amenities, supported by a team of intuitive professionals dedicated to assisting you from start to finish.



EVENT SPACE

CATEGORY	SQ.M.	RECEPTION	THEATER	CLASSROOM	CONFERENCE	BANQUET	U-SHAPE
GRAND BALLROOM 1	533	600	525	237	-	250	-
GRAND BALLROOM 2	190	200	204	72	-	90	39
GRAND BALLROOM 1+2	723	800	729	309	-	340	-
LILAC HALL A+B+C	262	200	160	90	-	140	36
BOTANICAL GARDEN HALL	729	800	250	80	-	230	30

MEETING SPACE

CATEGORY	SQ.M.	RECEPTION	THEATER	CLASSROOM	CONFERENCE	BANQUET	U-SHAPE
STUDIO	43.48	40	50	48	18	40	39
BRIDAL ROOM	23	25	30	24	-	20	18
VIP LOUNGE	21	20	20	24	9	10	11
BOARD ROOM	18.6	-	-	-	8	-	-

OTHER SPACE

CATEGORY	SQ.M.	RECEPTION	THEATER	CLASSROOM	CONFERENCE	BANQUET	U-SHAPE
ALTITUDE POOL & LOUNGE	832	160	-	-	-	-	-

AMENITIES

*Amenities may vary depending on space.

- 55 Electronic Flip Chart
- Customizable LED Lights
- State of art AV built in Equipment
- 265 Full - LCD Digital Screen

3F EVENT SPACE

- Grand Ballroom 1 5,737ft² / 533m²
- Grand Ballroom 2 2,045ft² / 190m²
- Grand Ballroom 1+2 27,782ft² / 723m²



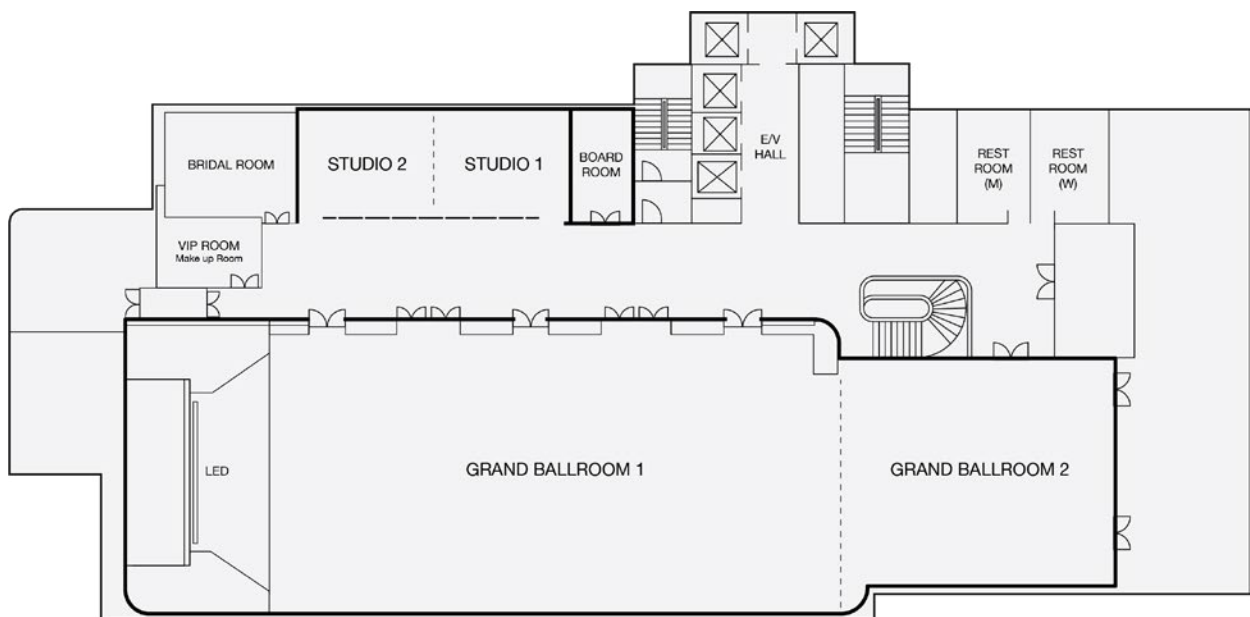
3F MEETING SPACE

- Studio 926ft² / 86m²
- Board Room 194ft² / 18m²



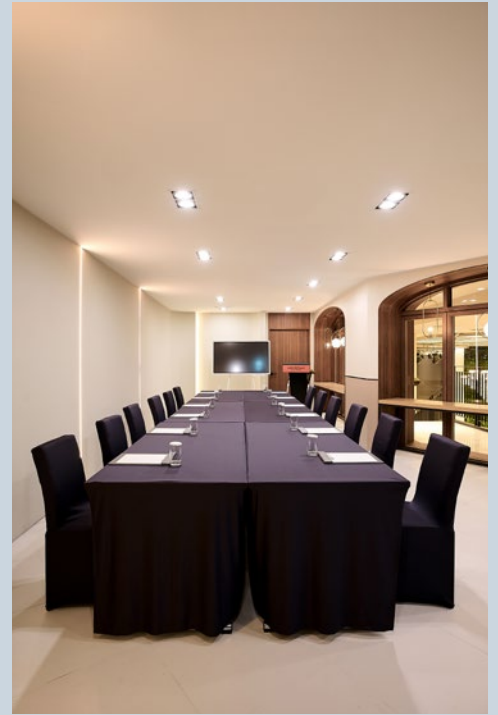
3F FLOOR PLAN

At Mondrian Seoul Itaewon, we offer a range of venues to suit every occasion. Our meeting rooms provide over 500 square feet of flexible event space, while our ballrooms feature an impressive 8,400 square feet. The Grand Ballroom is equipped with state-of-the-art technology, including a large LCD screen, projectors, and a premium audio system.



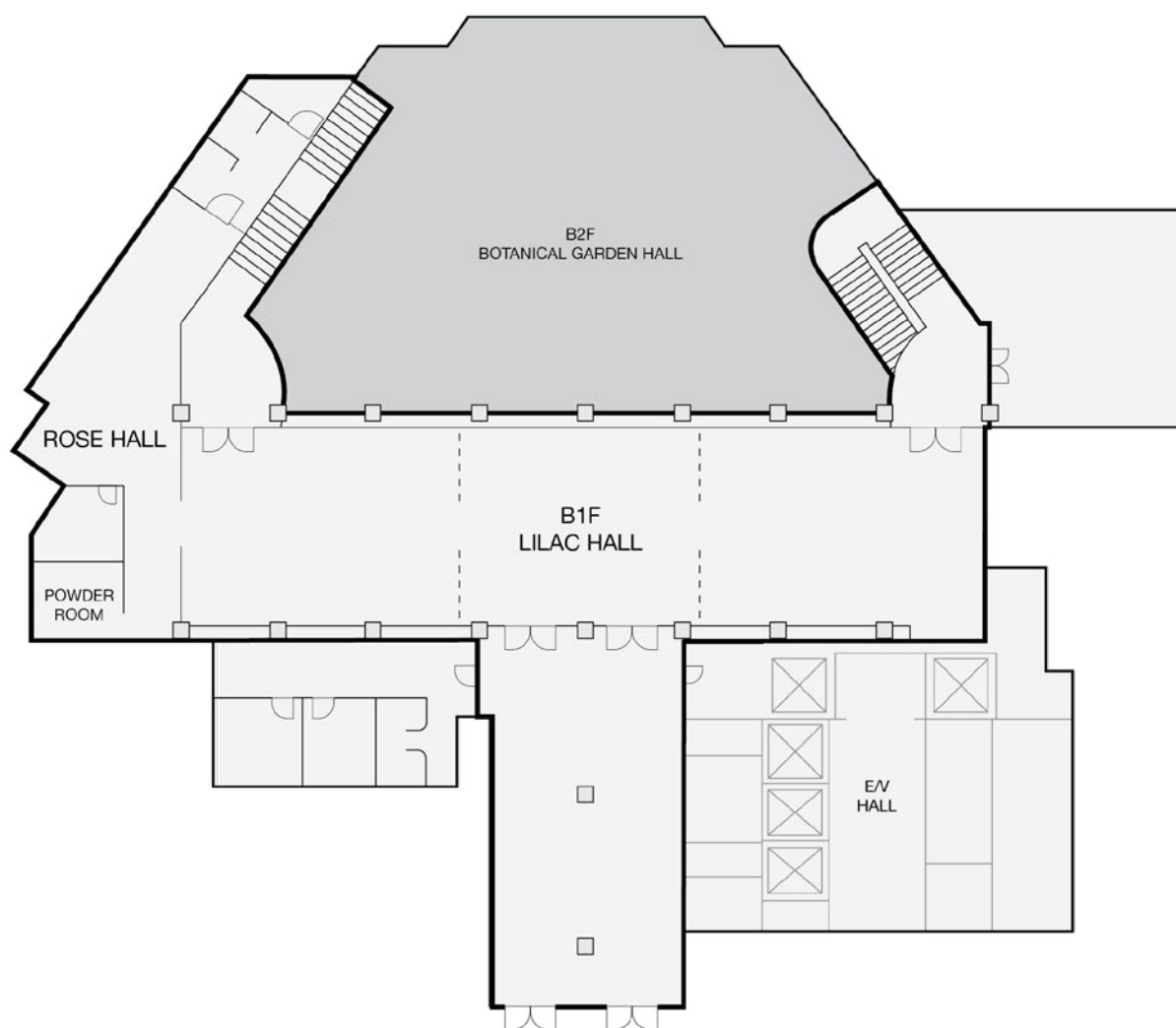
B1F EVENT SPACE

• Lilac Hall A+B+C, Rose Hall 3,466ft² / 322m²



B1F FLOOR PLAN

Located on the basement floor, the Botanical Garden (Lilac Hall) connects to the Garden Hall on B2 via a spiral staircase, offering a unique structure overlooking the stage and accommodating various types of events. Lilac Hall is divided into three sections(A, B, C) for independent and private event planning.



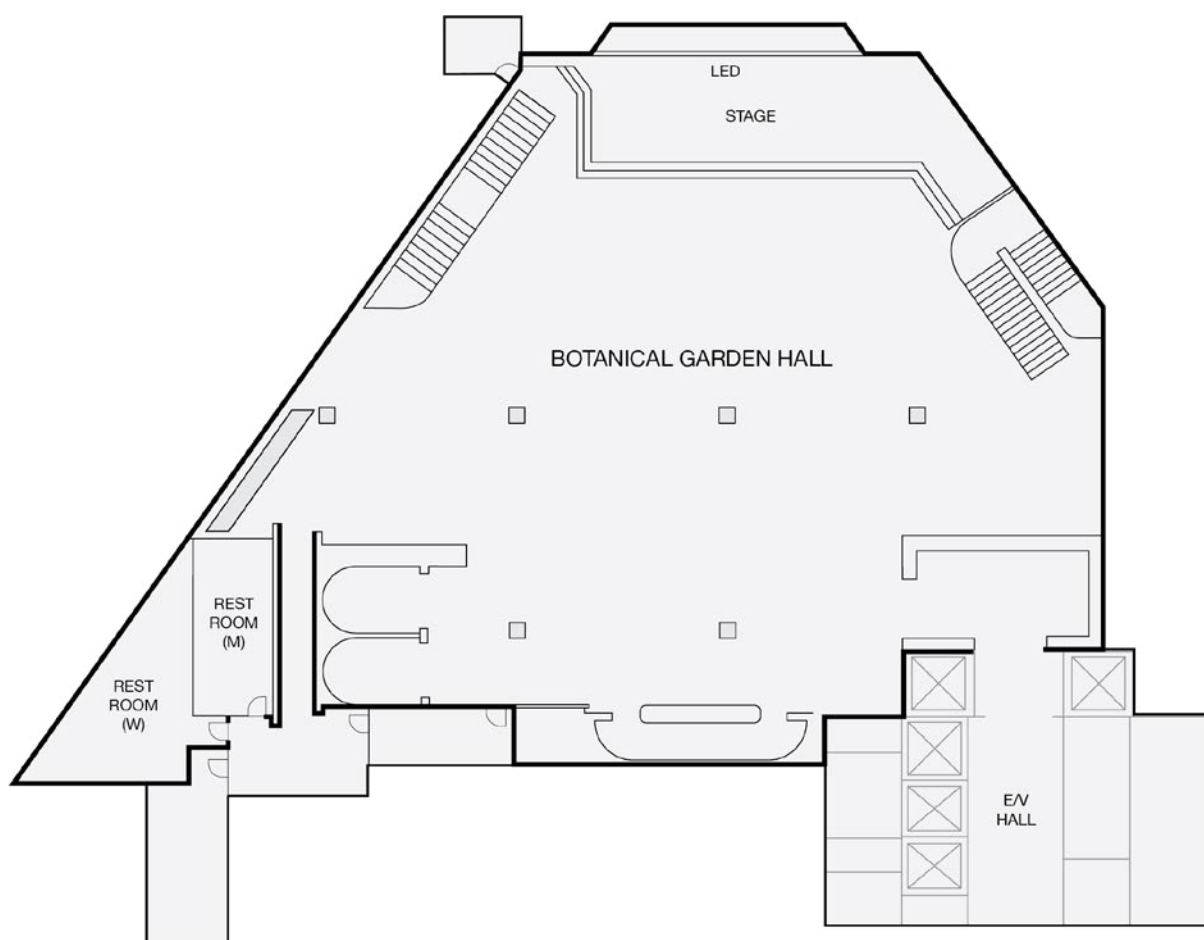
B2F EVENT SPACE

• Botanical Garden Hall 7,847ft² / 729m²



B2F FLOOR PLAN

The Botanical Garden Hall on B2 blends soaring ceilings, shimmering chandeliers, and lush botanical elements for a timeless yet modern ambiance. A full-size LED screen sets the stage while a sculptural staircase links the space to additional rooms on B1, offering seamless flow and endless creative possibilities.



WEDDINGS

At Mondrian Seoul Itaewon we design customized ceremonies according to your needs to make your day as special as it can be.

Our professional team works with you to bring your wedding day desires to life for a perfect day to remember.

From weddings to bridal showers, proposals, after-parties, and family gatherings, we can customize each ceremony to suit your personal style across up to 8,460 sq ft of space.

Wedding Inquiries | 02 2076 2076





WEDDINGS Grand Ballroom

The Grand Ballroom, located on the third floor, accommodates up to 330 guests and offers abundant natural light, creating an ideal setting for both house-style and outdoor-inspired weddings.

With six-hour intervals between weddings, the entire floor is reserved exclusively, ensuring a relaxed and private celebration.

mondrian-seoul.com | 02.2076.2076



WEDDINGS

Botanical Garden Hall

The newly opened Botanical Garden Hall accommodates up to 310 guests.

The spacious hall features high ceilings, elegant chandeliers, a large LED screen, and lush floral decor, creating a dramatic setting.

With a lounge bar at the back of the hall is ideal for a range of celebrations, from pre-wedding parties to after-parties and bespoke events.

mondrian-seoul.com | 02.2076.2076

FITNESS

The Gym at Mondrian Seoul Itaewon offers premium fitness membership and a refined wellness experience in the heart of the city.

The facilities include an indoor pool, fitness center, GX room, indoor golf range, and sauna.

Recognized by Louis Vuitton City Guide Seoul 2025 as “One of the Best Fitness in Town.”

Experience a modern wellness lifestyle that brings energy and balance to your day.

Membership Inquiries | 02 2076 2030



GYM

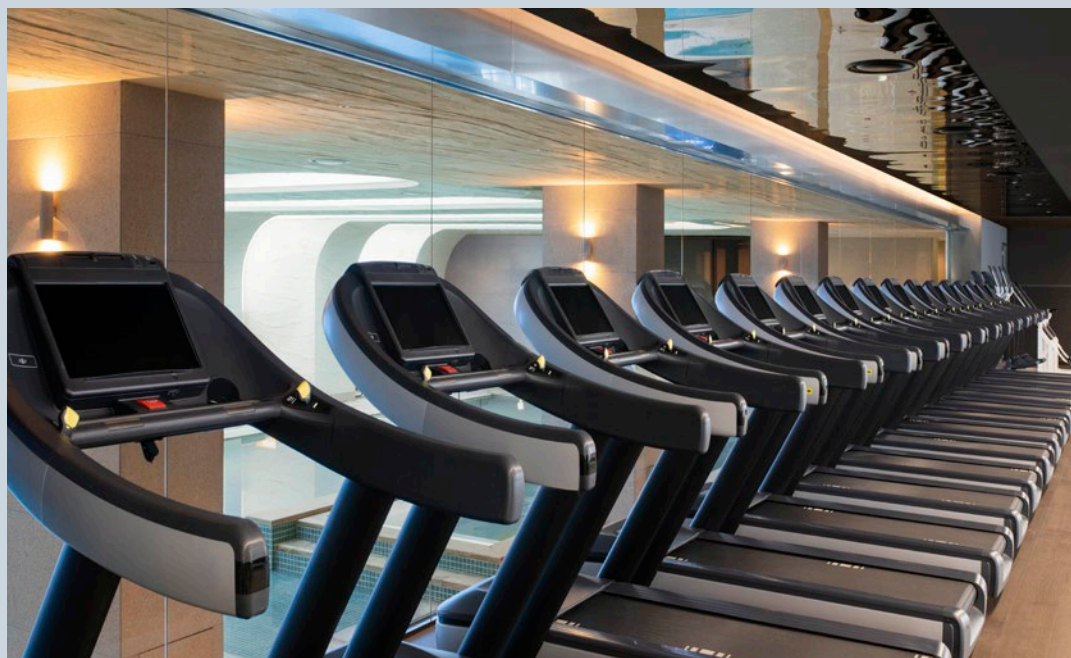


The fitness club, a space that adds vitality to life, is equipped with Technogym's state of the art cardiovascular and free weight equipment, and also runs systematic personal training by professional trainers.

BUSINESS HOUR

6 am - 10pm

Closed on the First Tuesday of Every Month



G.X. & PILATES ROOM



In the G.X room, there are various programs and member-only facilities that add fun to your exercise. We also offer high quality Pilates equipment and lessons from professional Pilates instructors. Whether you want to get your heart racing or work on your core, there is always something in the schedule for you.

BUSINESS HOUR

6 am - 10pm

Closed on the First Tuesday
of Every Month



GOLF

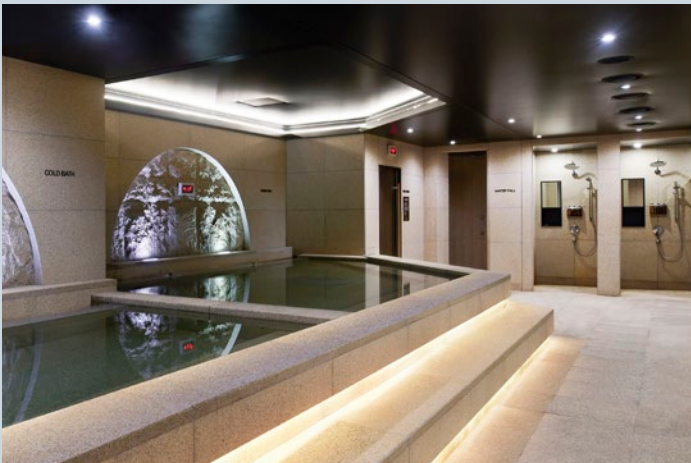


Work on your golf swing at our indoor screen golf zones or in the private room with a virtual golf enclosure where you can experience 150 different courses. Golf club rental services are available and you can also book training sessions with a professional golf coach. As a members-only facility, you can focus on your form in a very members-only without worrying about distractions or who might be wandering past.

BUSINESS HOUR

6 am - 10pm
Closed on the First Tuesday of Every Month

SAUNA



Mondrian Seoul Itaewon has a variety of spa facilities, including private standing & sit-down showers and dry sauna, for you to relax. Take some time to prioritize your well-being during your stay with us.

BUSINESS HOUR

6 am - 10pm
Closed on the First Tuesday of Every Month

INDOOR POOL



Our indoor swimming pool offers the high-class environment you deserve. The pool has a maximum length of 25 meters and a depth of 1.3 to 1.5 meters, and we provide vibrant music and a digital screen.

BUSINESS HOUR

6 am - 10pm
Closed on the First Tuesday of Every Month



MONDRIAN
SEOUL ITAEWON

23 Jangmun-ro, Yongsan-gu, 04392, Republic of Korea
mondrian-seoul.com | @mondrianseoulitaewon | 02.2076.2000